

Project Information Sheet

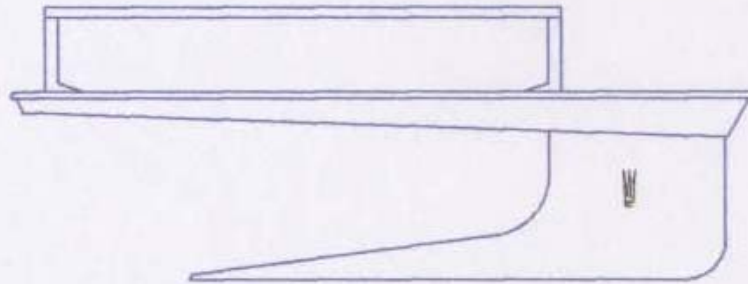
Lincoln Hotel,
Hotel & Conference Centre**Location**

Main hotel restaurant serving up to 160 people breakfast and evening dinner service.

Breakfast: Multiple set up for double sided access to cold well section, cold frost top section and contact hot top.

Lunch: Multiple set up for double sided access to cold well section, cold frost top section and contact hot top.

Dinner: Multiple set up for double sided access to cold well section, cold frost top section and contact hot top.

**The unique styling of 'Design State'****Case Study**

The food and beverage team needed a solution and centre piece for the recently refurbished main dining restaurant area, along with a piece of equipment that could be used in the busy banqueting and conferencing operation.

The unit comprises a chilled well section, frost top cold section and contact hot zone for maximum food display. Each zone can be independently controlled and with the double access dinners can be accommodated quickly during the busy breakfast, lunch and dinner periods. Along with these benefits the units are fully mobile and can be easily relocated and arranged should it be required for specialist conference or banqueting needs.

The installation of the Design State unit has also helped with staffing issues and created a striking central feature for this family owned and operated hotel.

Signature

FSE LIMITED