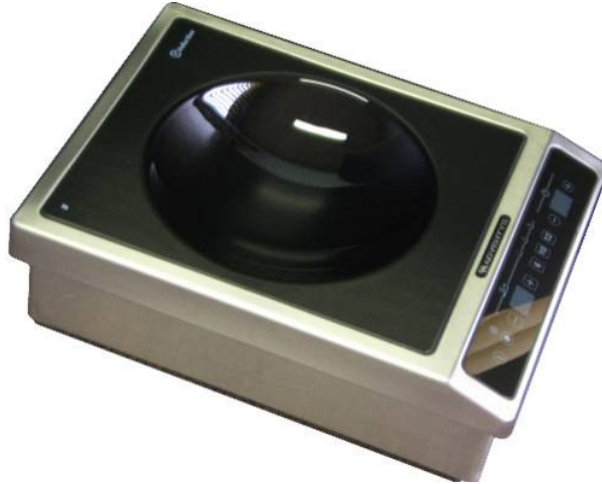


Model BWIC 3000



TECHNICAL SPECIFICATION

- **Exterior:** Pressed stainless steel outer casing incorporating flush fitted vitroceramic top and touch control panel.
- **Generator Coil:** Double generator coil 180mm & 280mm diameter with automatic selection and manual override for single or double coil use
- **Timer:** Integrated 99 minute timer with audio and visual alarm and power shut down mode.
- **Controls:** Vitroceramic touch control panel having coil selector control, manual power setting (+/-), preset power setting and timer control.
- **Pan Usage:** Induction will work with pans having a ferritic base, such as cast iron, enamelled iron and specific induction pans. Induction can also be used with cast iron searing / griddle plates for grilling meats, fish, and vegetables.

Technical Data Sheet

WHY INDUCTION?

- **Safety:** Induction technology heats the cookware, whilst the surrounding area stays cool to touch. Built in safety features include overheat and boil-over sensors, empty pan detector.
- **Precision:** Precise temperature control and instant response. 4 preset, boost mode and 12 heat levels evenly distributed for perfect and consistent results.
- **Power:** Twice as fast compared to any other cooking method, from 50watts to 3 kW. The 280 mm inductor is the largest on the market.
- **Efficiency:** 90% energy efficient, (compared to 50% for gas), high efficiency = maximum yield. Energy consumption half that of gas.
- **Ease of Maintenance:** Surface simply wipes clean after use.
- **Ideal for all types of cooking:** Searing meat, braising, boiling, sauté, shallow fry, stir fry, casseroles, crepes, omelettes, eggs, melting chocolate. From production to pastry areas and great for theatre cooking!

TECHNICAL DETAILS

- **Dimensions:** 390mm wide x 525mm deep x 170mm high (Usable surface 340mm wide x 405mm). Maximum Pan size 320mm diameter
- **Power:** 2.8kW (12.2amp load) - Unit fitted as standard with three core 1.5m cable and 13amp three pin plug.
- **Packing:** Unit shipped in box suitable for transportation 495mm wide x 625mm deep x 200mm high. Unit has a net weight of 10.8kgs
- **Standards:** Complies with EN60335-2-36 (European Standard for safety of electrical appliances. IP259 (Protection rating) NFU60-010 (Hygiene)
- **Product Code:** WOPC3000

CD Presentation
available upon request